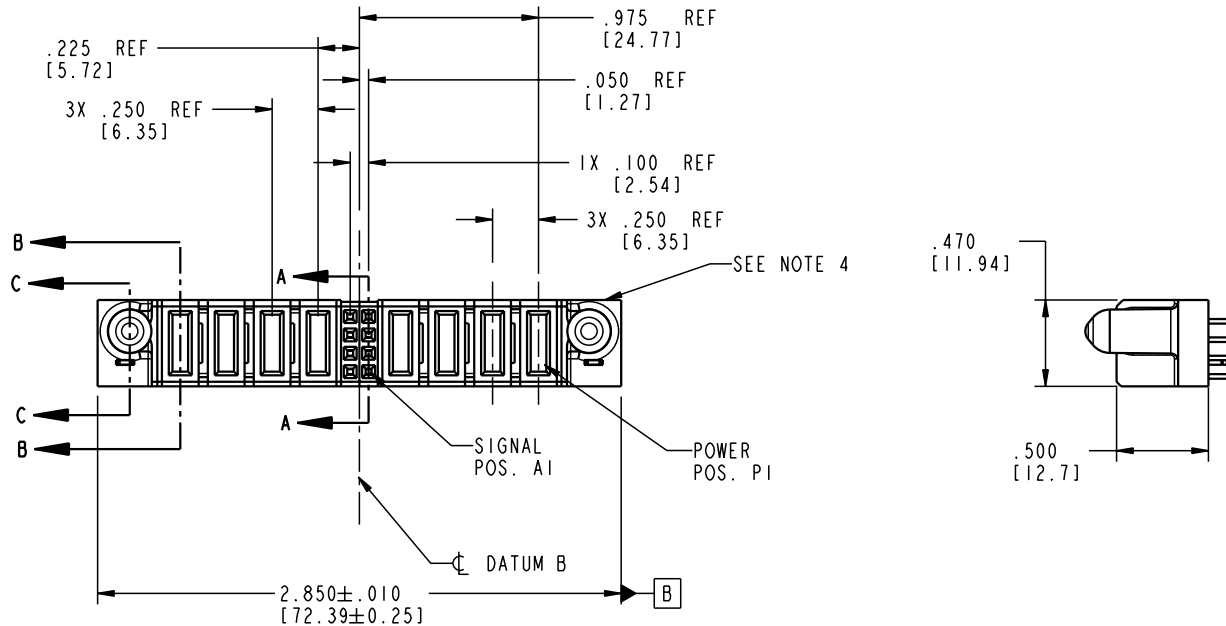


Tous droits strictement réservés. Reproduction ou communication a des tiers interdite sous quelque forme que ce soit sans autorisation écrite du propriétaire. Propriété de c.FCI. Droits de reproduction FCI.



All rights strictly reserved. Reproduction or issue to third parties in any form whatever is not permitted without written authority from the proprietor. Property of FCI. Copyright FCI.

PRODUCT NO.	ROWS	POWER				S.	POWER				E1
		E2	P8	P7	P6	P5	2 1	P4	P3	P2	
51740-10400804AA	DURA										



CODE	DIM "M" MATING LENGTH	CONTACT TYPE
E	N/A [N/A]	SIGNAL
PA	.042 [1.07]	POWER
HA	N/A [N/A]	HOLD-DOWN

mat'l code		SEE NOTE 2		tolerances unless otherwise specified		CUSTOMER		 www.fciconnect.com	
ltr	ecn no.	dr	date	linear	$.XX \pm .01 / 0.X \pm 0.3$ $.XXX \pm .005 / 0.XX \pm 0.13$ $.XXX \pm .0020 / 0.XXX \pm 0.051$	COPY		title	
A	V03-0859	MEM	8/4/03	angles	$0^\circ \pm 2^\circ$	projection		4P + 8S + 4P VERTICAL SOLDER RECEPT	
				dr	M. MOSTOLLER 8/4/03	 INCH/MM		product family	
				enr	M. MOSTOLLER 8/4/03	scale		PwrBlade	
				chr	H. BREWBAKER 8/4/03	1:1		code	
				appd	M. MOSTOLLER 8/4/03	A		213	
sheet index		revision sheet	A 1	A 2	A 3	A 4	size dwg no		sheet
			1	2	3	4	A 51740-10400804AA		1 of 4

cage code 22526

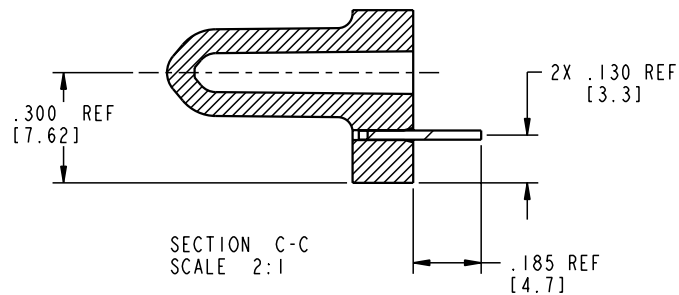
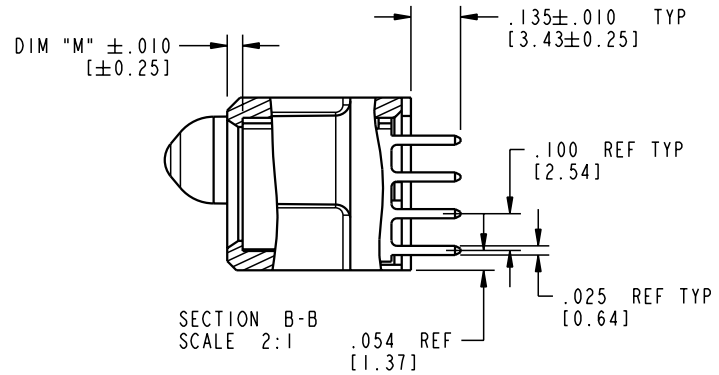
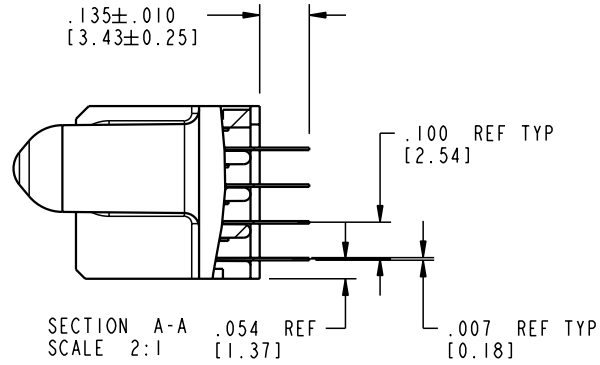
Pro/E

Tous droits strictement réservés. Reproduction ou communication a des tiers interdite sous quelque forme que ce soit sans autorisation écrite du propriétaire. Propriété de c FCI. Droits de reproduction FCI.



All rights strictly reserved. Reproduction or issue to third parties in any form whatever is not permitted without written authority from the proprietor. Property of FCI. Copyright FCI.

PRODUCT NUMBER
51740-10400804AA



mat'l code				SEE NOTE 2		tolerances unless otherwise specified		CUSTOMER		 www.fciconnect.com	
ltr	ecn no.	dr	date	linear	XX±.01/0.X±0.3	projection	COPY		title		
A					XXX±.005/0.XX±0.13				4P + 8S + 4P		
				angles	XXX±.0020/0.XXX±0.051		INCH/MM		VERTICAL SOLDER RECEPT		
				dr	M. MOSTOLLER 8/4/03	scale	1:1		product family		code
				enr	M. MOSTOLLER 8/4/03			PwrBlade		213	
				chr	H. BREWBAKER 8/4/03			size		sheet	
				appd	M. MOSTOLLER 8/4/03			A 51740-10400804AA		2 of 4	
sheet index		revision sheet									

cage code 22526

Pro/E

Tous droits strictement réservés. Reproduction ou communication a des tiers interdite sous quelque forme que ce soit sans autorisation écrite du propriétaire. Propriété de c.FCI. Droits de reproduction FCI.



All rights strictly reserved. Reproduction or issue to third parties in any form whatever is not permitted without written authority from the proprietor. Property of FCI. Copyright FCI.

1 | 2

3 |

4

PRODUCT NUMBER

51740-10400804AA

NOTES:

1. DIMENSIONS AND TOLERANCES ARE IN ACCORDANCE WITH ASME Y14.5M, 1994 UNLESS OTHERWISE SPECIFIED.

CONNECTOR NOTES:

- 2 HOUSING MATERIAL: UL 94 V-0 GLASS FILLED
HIGH-TEMP THERMOPLASTIC
POWER CONTACT MATERIAL: COPPER ALLOY
SIGNAL PIN MATERIAL: COPPER ALLOY
- 3. PLATING:
SIGNAL PINS: 30u"/0.76um Au OVER 50u"/1.27um Ni
POWER CONTACTS: 50u"/1.27um Ni UNDER ALL
WITH 30u"/0.76um Au ON CONTACT AREA
AND SnPb ON PCB INTERFACE

4 MANUFACTURER'S NAME, P/N, AND DATE CODE TO APPEAR ON THIS SURFACE.

5. PRODUCT SPECIFICATION GS-12-149.
APPLICATION SPECIFICATION BUS-20-067.

6. PACKAGED IN TRAYS.

PCB NOTES:

7. ALL HOLE DIAMETERS ARE FINISHED HOLE SIZE.

8 MOUNTING HOLES, WHERE APPLICABLE, ARE UNPLATED.

9 $\varnothing .0453 \pm .0010$ [1.151 \pm 0.025] DRILLED HOLES PLATED WITH
.0003 [0.008] MIN SnPb OVER .001 [0.03]
TO .003 [0.08] Cu PLATING TO ACHIEVE
 $\varnothing .040 \pm .003$ [1.02 \pm .07] HOLE.

10 "DIM XXX" TO BE DETERMINED BY THE CUSTOMER.

11 CONNECTOR KEEP-OUT ZONE.

mat'l code		SEE NOTE 2		tolerances unless otherwise specified		CUSTOMER		 www.fciconnect.com	
lfr	ecn no.	dr	date	linear	$.XX \pm .01 / 0.X \pm 0.3$ $.XXX \pm .005 / 0.XX \pm 0.13$ $.XXX \pm .0020 / 0.XXX \pm 0.051$	projection	COPY		title
A				angles	$0^\circ \pm 2^\circ$				4P + 8S + 4P VERTICAL SOLDER RECEPT
		dr	M. MOSTOLLER	8/4/03			product family	PwrBlade	code
		enr	M. MOSTOLLER	8/4/03			size	dwg no	213
		chr	H. BREWBAKER	8/4/03			scale	1:1	sheet
		appd	M. MOSTOLLER	8/4/03				51740-10400804AA	4 of 4
sheet index	revision sheet								

1 | 2

Pro/E

3 |

cage code 22526

4